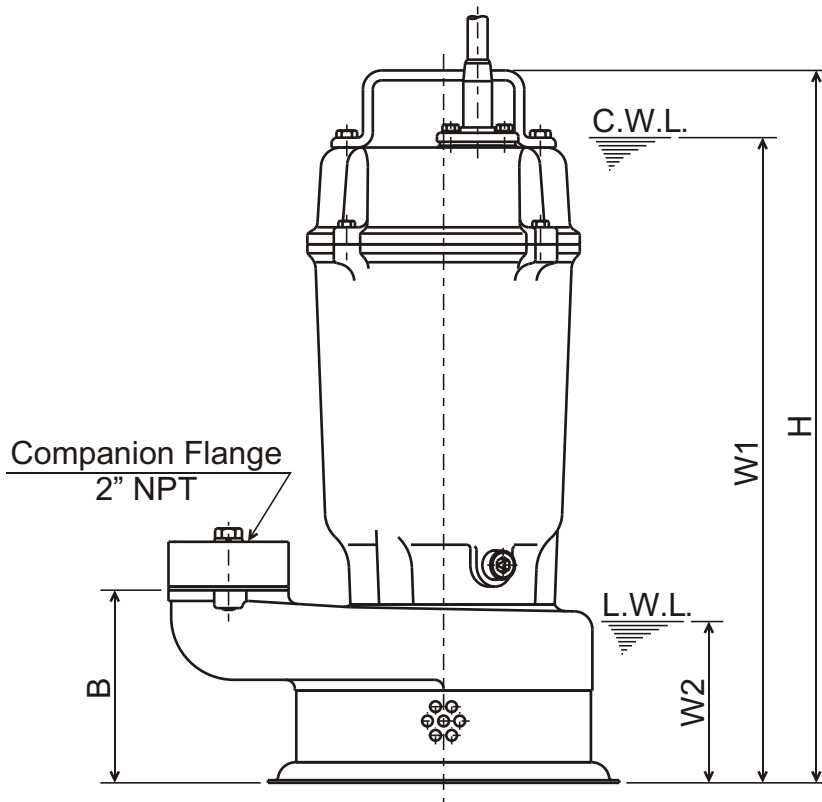
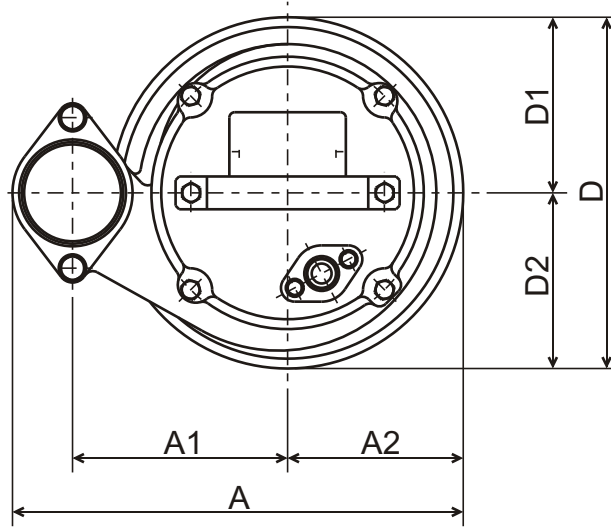




**SFQ - SERIES**  
**ALL 316SS-DEWATERING PUMPS**

**DIMENSIONS**

**50SFQ2.75-62**



C.W.L. : Continuous running Water Level  
L.W.L. : Lowest running Water Level

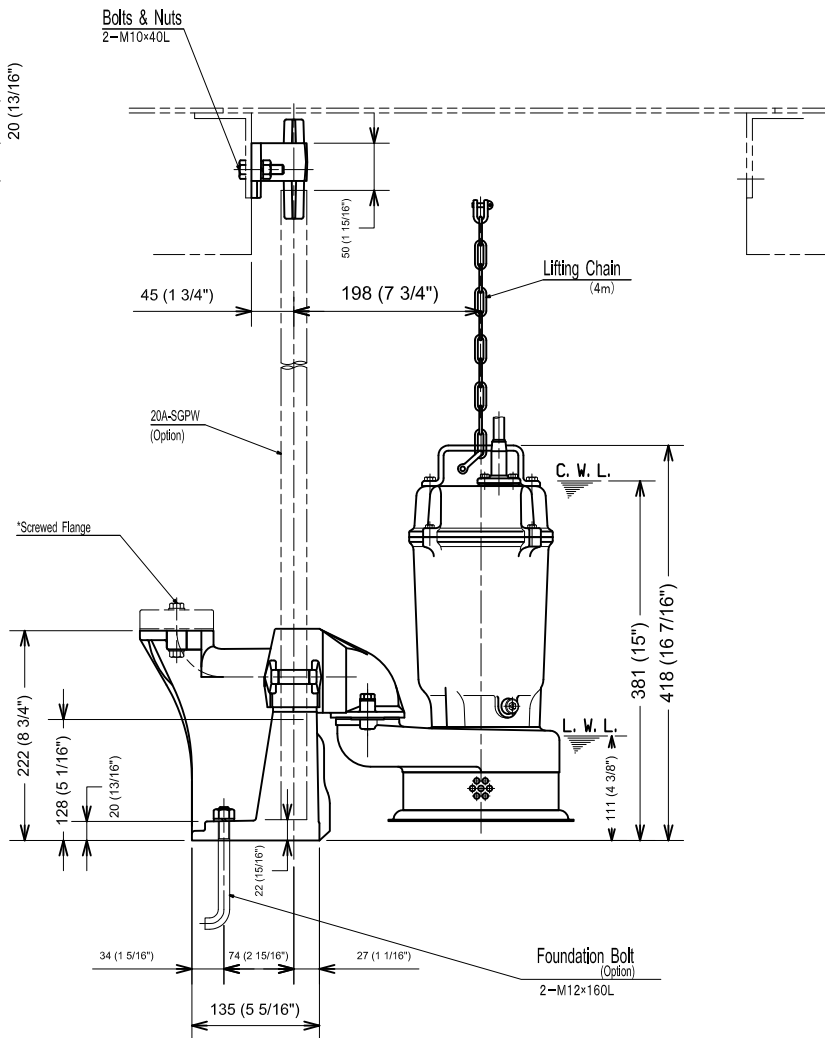
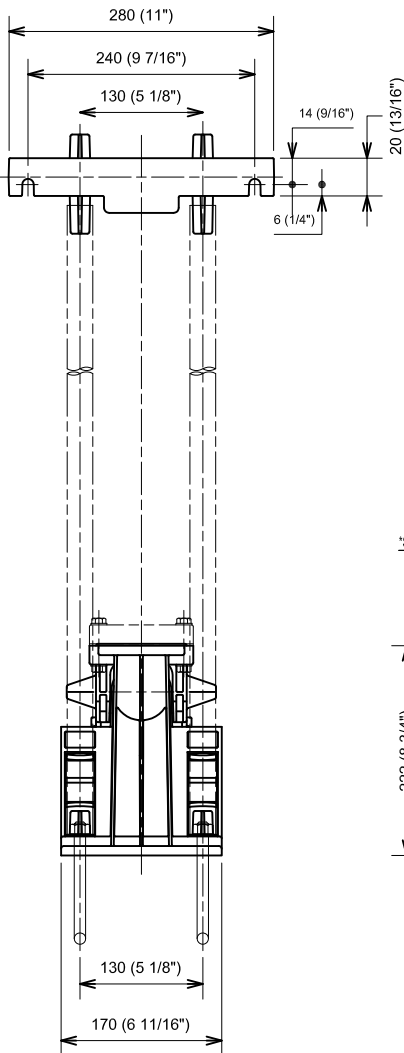
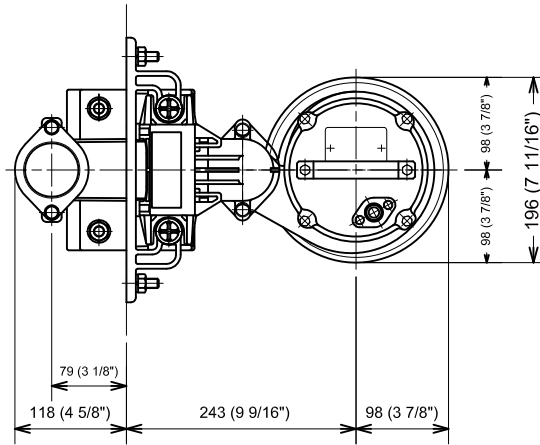
**DIMENSIONS:USCS (Inch)**

Model	HP	NOM. SIZE	Pump & Motor								C.W.L. W1	L.W.L. W2	Wt. (lbs.)
			A	A1	A2	B	D	D1	D2	H			
50SFQ2.75-62	1	2"	9 15/16	4 3/4	3 7/8	4 1/4	7 11/16	3 7/8	3 7/8	15 11/16	14 1/8	3 1/2	49

**DIMENSIONS:METRIC (mm)**

Model	kW	NOM. SIZE	Pump & Motor								C.W.L. W1	L.W.L. W2	Wt. (kg)
			A	A1	A2	B	D	D1	D2	H			
50SFQ2.75-62	0.75	50	252	120	98	108	196	98	98	398	360	90	22

**TOK-50SFQ2.75 -62**



\*Use the screwed flange which is supplied with the pump.

C.W.L. :Continuous running Water Level  
 L.W.L. :Lowest running Water Level

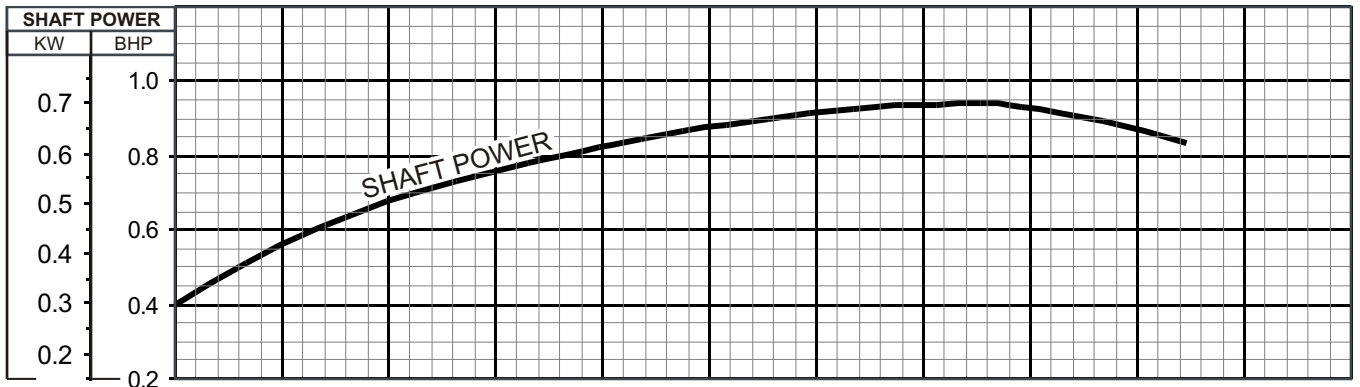
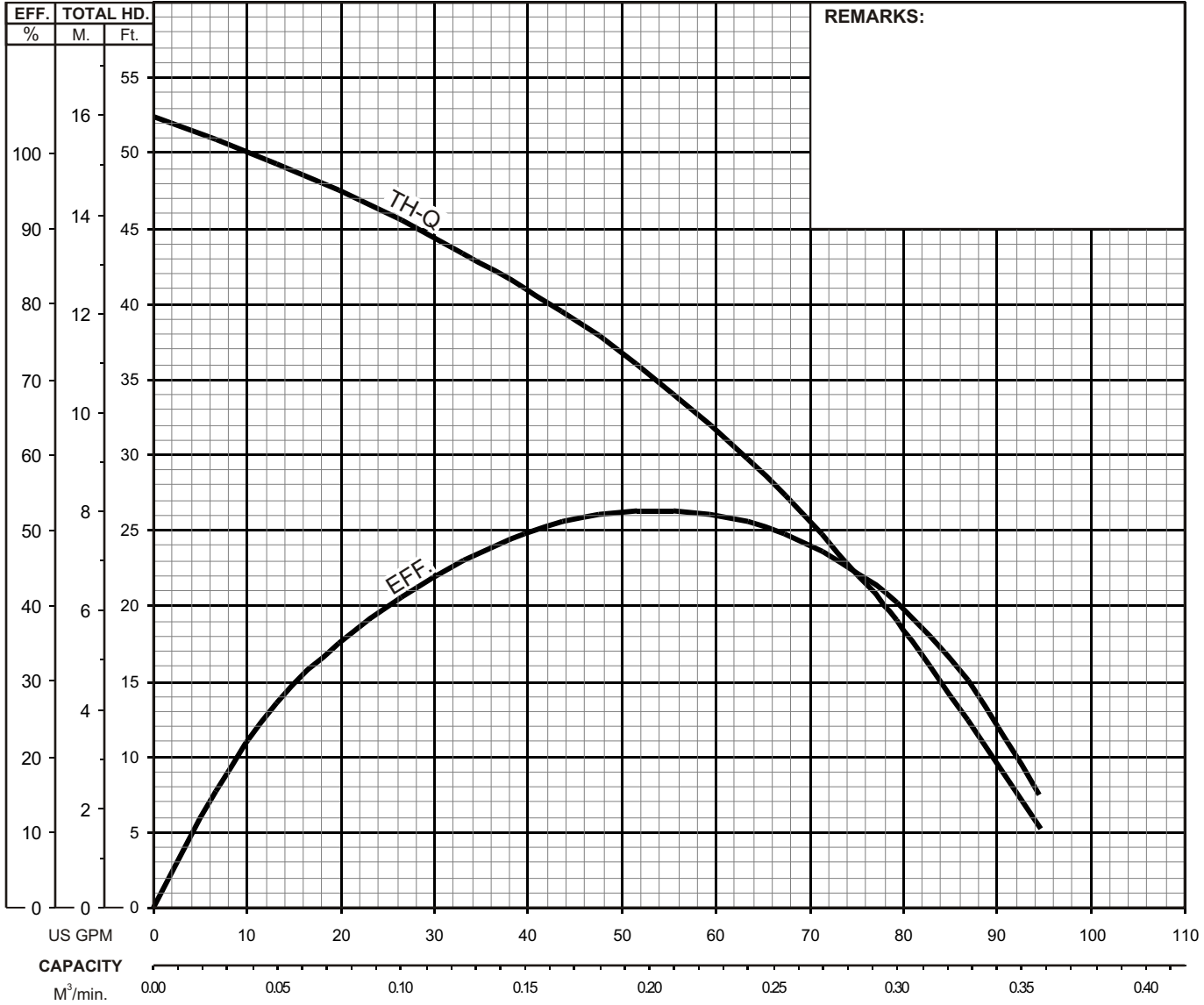


# SFQ - SERIES

## ALL 316 SS-DEWATERING PUMPS

# PERFORMANCE CURVE

MODEL	BORE	HP	KW	RPM	SOLIDS DIA	LIQUID	SG.	VISCOSITY	TEMP.
50SFQ2.75 -62	2" / 50mm	1	0.75	3430	0.236" / 6mm	Water	1.0	1.123 cSt.	60°F
PUMP TYPE	PHASE	VOLTAGE	AMPERAGE	HZ	STARTING METHOD	INS. CLASS			
All 316 SS - Dewatering Pumps	3	208-230 / 460 / 575	3.5-3.1 / 1.6 / 1.4	60	Direct On Line	E			
CURVE No.	DATE	PHASE	VOLTAGE	AMPERAGE	HZ	STARTING METHOD	INS. CLASS		
-	-	-	-	-	-	-	-		

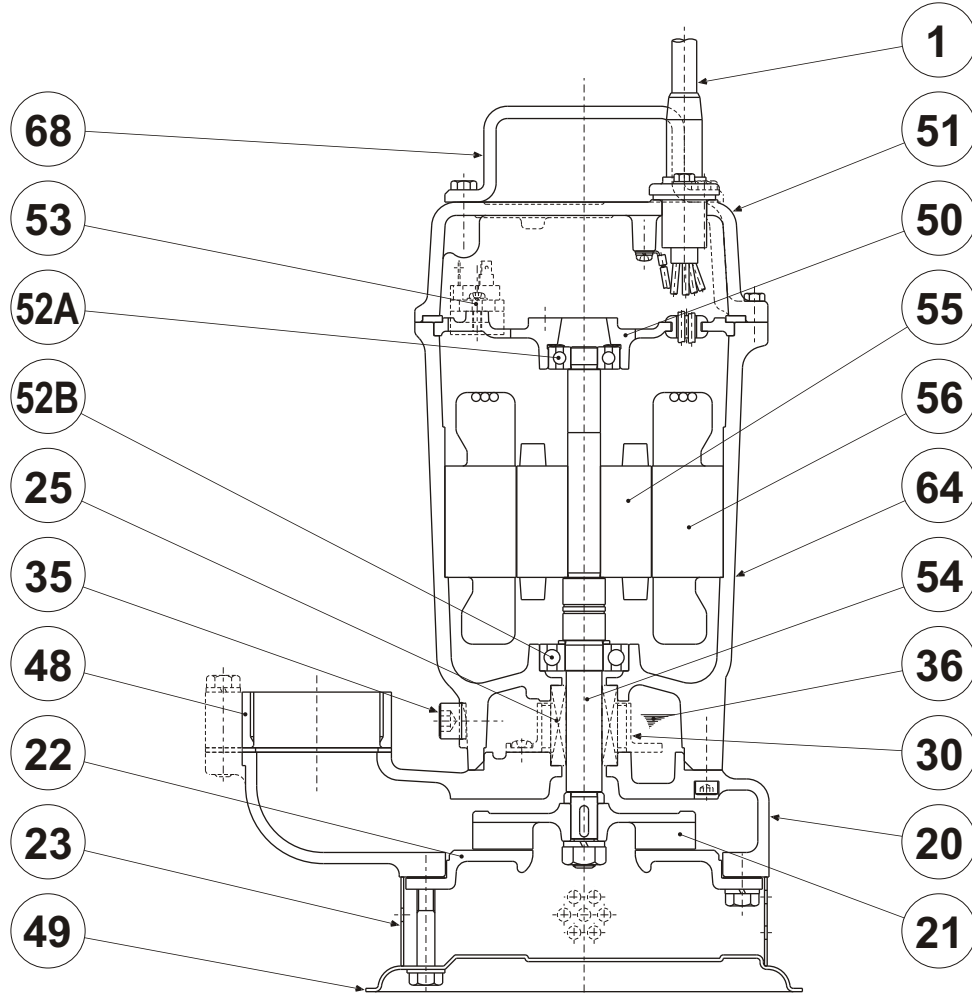




**SFQ - SERIES**  
**ALL 31655-DEWATERING PUMPS**

**SECTIONAL VIEW**

50SFQ2.75-62



PART#	DESCRIPTION	MAIN MATERIAL / NOTE	ASTM, AISI CODE	RELATED DIN CODE	QTY
1	Power Cable	PVC Sheath AWG16/4-32ft			1
20	Pump Casing	Stainless Steel Casting	A743 CF-8M	GX5CrNiMo 19-11-2	1
21	Impeller	Stainless Steel Casting	A743 CF-8M	GX5CrNiMo 19-11-2	1
22	Suction Cover	Stainless Steel Casting	A743 CF-8M	GX5CrNiMo 19-11-2	1
23	Suction Strainer	Stainless Steel	S 31600	1.4401	1
25	Mechanical Seal	Silicon Carbide / X-16W			1
30	Oil Lifter	PBT Plastic w/(GF+MD)40			1
35	Oil Plug	Stainless Steel / M10x20L	AISI 316	17440 X 5 CrNiMo 17122	1
36	Lubricant	Turbine Oil ISO VG32 or SAE10W/20W			
48	Companion Flange	Stainless Steel Casting / NPT 2"	A743 CF-8M	17445 G-X 6 CrNiMo 1810	1
49	Bottom Plate	Stainless Steel	S 31600	1.4401	1
50	Motor Bracket	Cast Iron	A48M Class 25B	EN 1561 GJL-150	1
51	Motor Head Cover	Stainless Steel Casting	A743 CF-8M	GX5CrNiMo 19-11-2	1
52A	Upper Bearing	#6201ZZC3			1
52B	Lower Bearing	#6203ZZC3			1
53	Motor Protector				1
54	Shaft	Stainless Steel	S 31600	1.4401	1
55	Rotor				1
56	Stator				1
64	Motor Housing	Stainless Steel Casting	A743 CF-8M	GX5CrNiMo 19-11-2	1
68	Handle	Stainless Steel	S 31600	1.4401	1

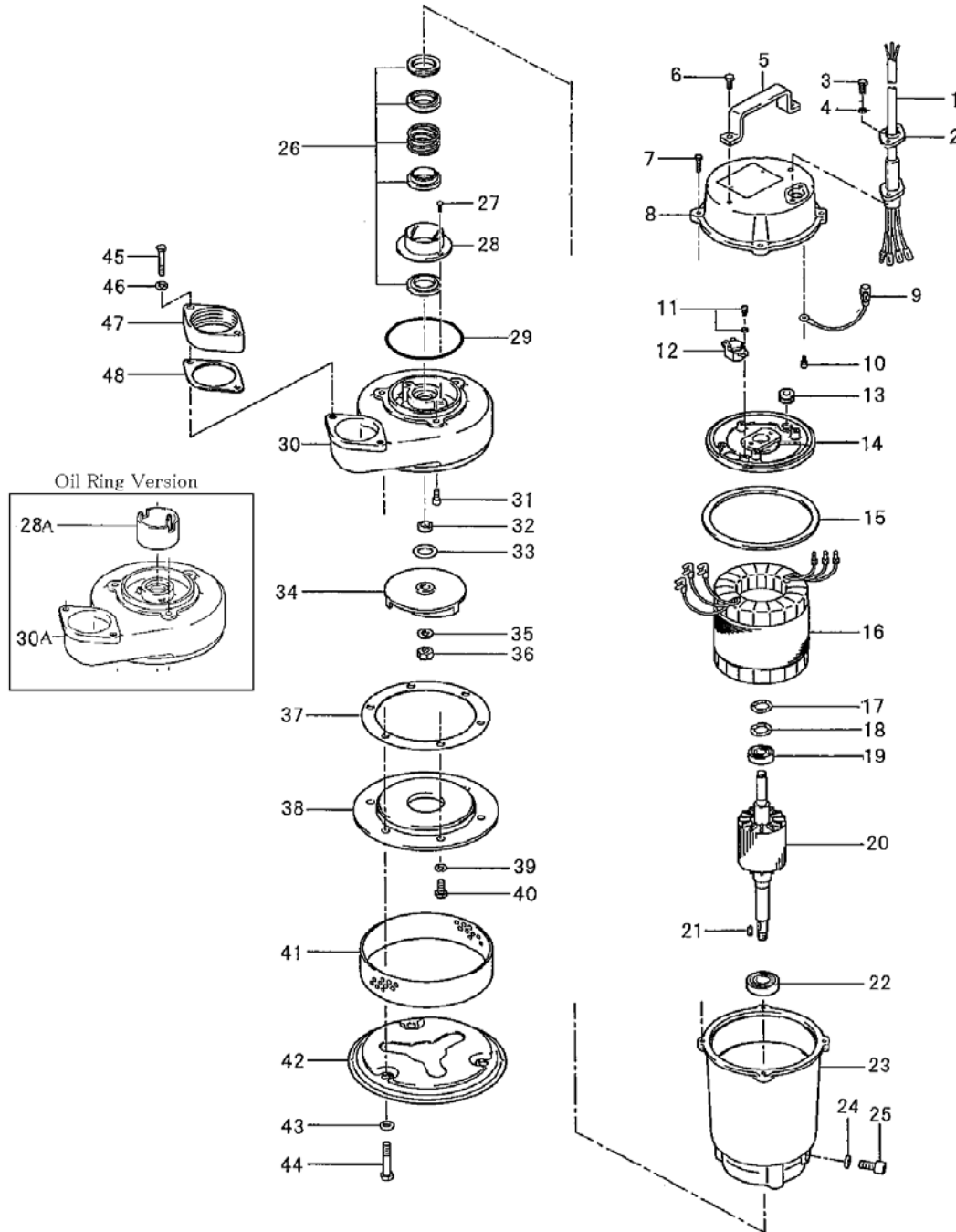
PARTS LIST		CORROSION RESISTANT PUMP				9/1/2016
ITEM	PART No.	DESCRIPTION	QTY	SIZE	MATERIAL	NOTES
1	001-803-20	Cabtyre Cable Set (32') 60Hz(USA)	1	VCT4Cx1.25mm2	LBT	
2	003-190-10	Gland	1		SUS316	
3	140-018-24	Hex.Bolt	2	M5x15	SUS316	
4	142-125-34	Plain Washer	2	M5	SUS316	
5	068-191-12	Handle	1	4/8-CL2	SUS316	
6	140-032-24	Hex.Bolt	2	M6x15	SUS316	
7	051-171-14	Motor Head Cover	1		SCS14	
8	140-021-20	Hex.Bolt	4	M5x20	SUS316	
9	009-001-06	Earth Terminal	1Set	1.25mm2x80L		
10	143-085-21	Pan Screw (w/Spring Washer)	1	M4x6	SWRM	
11	143-126-38	Pan Screw (w/Spring Washer/Plain Washer)	2	M4x12	SWRM	
12	053-267-14	Motor Protector 460V-60Hz(USA)	1	KA311-DAXL63	(T)	
13	016-100-13	Lead Wire Protection Bush	1	S-400(E)	NBR	
14	050-245-17	Motor Bracket	1		FC	
15	121-252-10	Packing	1	d127.3xd144.8x3.5t	NBR	*
16	056-006-99	Stator 460V-60Hz(USA)	1Set			
17	142-192-16	Wave Washer	1	6201(D=32,t=0.4)	SK5	
18	142-451-16	Wave Washer	1	6201(D=32,t=0.25)	SUP	
19	052-100-15	Bearing	1	6201ZZC3		
20	055-002-24	Rotor	1Set	w/Bearing		
21	147-035-15	Impeller Key	1	4x4x13.5L	SUS316	
22	052-102-17	Bearing	1	6203ZZC3		
23	064-330-13	Motor Frame	1		SCS14	
24	121-387-15	Packing	1	d10.3xd16x3t	PE	*
25	035-117-12	Oil Plug	1	M10x20	SUS316	
26	025-189-14	Mechanical Seal	1	X-16W	SiC	
27	143-070-23	Pan Screw	2	M5x6	SWRM	
28	030-157-19	Oil Lifter	1	W-14HL	Resin	
29	122-129-23	O-Ring	1	G-90(89.4xd3.1)	VITON	*
30	020-000-99	Pump Casing(for Oil Lifter)	1	50SFQ2.4/.75-51/61(Oil Lifter)	SCS14	
31	140-249-26	Hex.Socket Cap Bolt	3	M6x15	SUS316	
32	071-105-19	Shaft Sleeve	1	4-CLS	SUS316	
33	040-114-15	Impeller Shim		d12.2xd17x0.3t	SUS316	
34	021-933-19	Impeller (60Hz)	1	50SFQ2.75-62	SCS14	
35	142-164-22	Spring Washer	1	M10	SUS316	
36	141-006-22	Hex.Nut	1	M10	SUS316	
37	120-131-19	Packing (S.Cover)		d125xd159x0.3t	PE	
38	022-304-18	Suction Cover	1	4-CL	SCS14	

PARTS LIST		CORROSION RESISTANT PUMP				9/1/2016
ITEM	PART No.	DESCRIPTION	QTY	SIZE	MATERIAL	NOTES
39	142-163-21	Spring Washer	3	M8	SUS316	
40	140-052-20	Hex.Bolt	3	M8x16	SUS316	
41	023-122-13	Strainer	1	4-CL	SUS316	
42	049-125-16	Bottom Plate	1	4-CL	SUS316	
43	142-127-36	Plain Washer	3	M8	SUS316	
44	140-060-21	Hex.Bolt	3	M8x50	SUS316	
45	140-058-26	Hex.Bolt	2	M8x40	SUS316	
46	142-163-21	Spring Washer	2	M8	SUS316	
47	048-188-14	Screwed Flange	1	NPT-2(P.C.84)	SCS14	
48	121-149-13	Packing	1	P.C.84xd55	Cork	*
28A	030-116-29	Oil Ring	1	LB	Resin	
30A	020-581-15	Pump Casing	1	4/8-CL2	SCS14	
	173-279-14	<b>Packing O-Ring Set</b>	1Set	(Marked by *)		
15	121-252-10	Packing (M.Bracket/Head Cover)	1	d127.3xd144.8x3.5t	NBR	*
24	121-387-15	Packing (Oil Plug)	1	d10.3xd16x3t	PE	*
29	122-129-23	O-Ring (M.Frame/P.Casing)	1	G-90(89.4xd3.1)	VITON	*
48	121-149-13	Packing (Screwed Flange)	1	P.C.84xd55	Cork	*
		Lubricant		Turbine Oil VG32 125ml		

PARTS LIST		CORROSION RESISTANT PUMP				9/1/2016
ITEM	PART No.	DESCRIPTION	QTY	SIZE	MATERIAL	NOTES

## EXPLODED VIEW

50SFQ2.75-52/62



C-00223-1